

(The annotations to this game, by V. V. Smyslov, are from his autobiographical work *V poiskakh garmonii* (Fizkultura i Sport, 1979). The translation from the original Russian is by Douglas Griffin.)

Ståhlberg – Smyslov
3rd round, Stockholm International 1963/64

1.c4 e5 2.Nc3 d6 3.d4 exd4

This exchange releases the pawn tension in the centre, but promises Black quite good piece play.

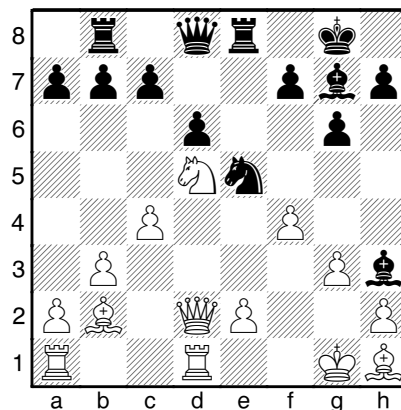
4.Qxd4 Nc6 5.Qd2 g6 6.b3 Bg7 7.Bb2 Nf6 8.g3 0–0 9.Bg2 Ne5 10.Nf3!

Correctly played. Weaker is 10.Nh3 on account of 10...a5 11.0–0 a4 12.Nxa4 Nxc4 13.bxc4 Rxa4 with good chances for Black.

10...Nxf3+ 11.Bxf3 Rb8 12.0–0 Bh3 13.Rfd1 Nd7 14.Bh1 Re8

Both sides have completed development and are ready for active play. White disposes of an forepost on d5; Black's chances are on the king's side.

15.Nd5 Ne5 16.f4



A double-edged continuation, since now the position of the white king is weakened. The following reply by Black leads to interesting complications.

16...c6! 17.fxe5 cxd5 18.Bxd5

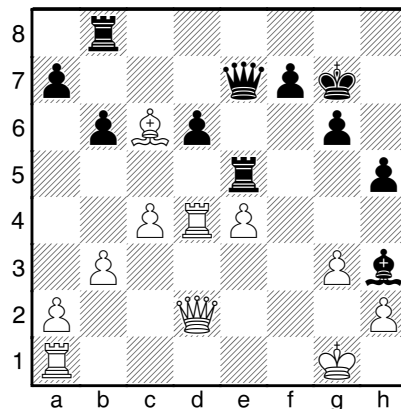
18.exd6 did not promise any advantage in view of the variation 18...Bxb2 19.Qxb2 Qxd6 20.Rxd5 Qb6+ 21.c5 Qb5 22.Bf3 Be6 23.Re5 f6, and White cannot hold the c5–pawn.

18...Bxe5 19.Bxe5 Rxe5 20.e4?

An unfortunate move. Now White's bishop is restricted by its own pawns and cannot take part in the defence of the king. Stronger was 20.Bf3, in which Black proposed to reply 20...Re6, not

fearing 21.c5 on account of 21...Qf6 22.cxd6 Rd8, and White's passed pawn is lost.

20...Qe7 21.Qf2 b6 22.Rd4 Kg7 23.Qd2 h5 24.Bc6



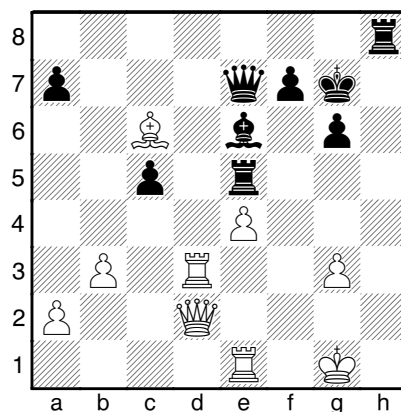
24...h4!

Not stopping at the sacrifice of a pawn, for the sake of a direct attack on the king. Black's rook occupies a key position in the centre, and White's chances on the open d-file are not great.

25.Rxd6 hxg3 26.hxg3 Rh8 27.c5

White returns the extra pawn, but proves not to be able to slow down the enemy offensive.

27...bxc5 28.Re1 Be6 29.Rd3



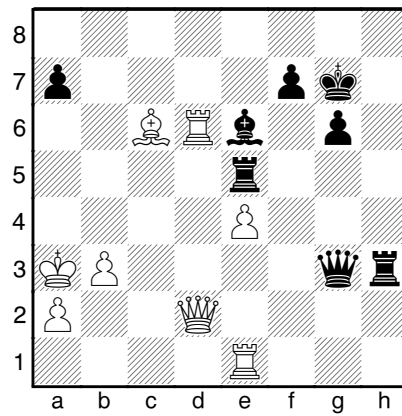
29...c4

With the threat of 30...Qc5+. The advance of the c-pawn disorganises White's defence.

30.Rd6 c3! 31.Qd4 Qg5 32.Qxc3 Qh5 33.Kf1 Bg4 34.Kf2

There is nothing better. The king sets off on a long and dangerous voyage.

34...Qh2+ 35.Ke3 Qxg3+ 36.Kd4 Qf4 37.Kc4 Rh3 38.Qd2 Be6+ 39.Kb4 Qg3 40.Ka3



The king has seemingly found a safe shelter on the other side of the board. But also here it is hit by an unexpected blow. However, after other replies too the game is lost.

40...Bxb3!

White resigned.