

(The annotations to this game, by V. V. Smyslov, are from his autobiographical work *V poiskakh garmonii* (Fizkultura i Sport, 1979). The translation from the original Russian is by Douglas Griffin.)

### Smyslov – Mestel

15<sup>th</sup> round, Hastings International, 13<sup>th</sup> January 1973

1.c4 Nf6 2.Nc3 e5 3.Nf3 Nc6 4.g3 Bb4 5.Bg2 0–0 6.0–0 Re8

A perfectly possible move. More often encountered is 6...e4 and then 7.Ne1 Bxc3 8.dxc3 h6 with an acceptable game for Black.

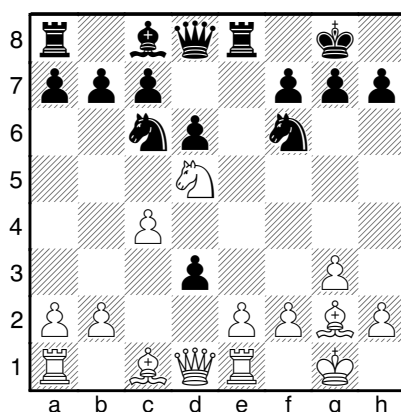
7.Nd5 e4

Now this continuation is less justified. Preferable is 7...Nxd5 8.cxd5 Nd4.

8.Ne1 d6 9.d3

In this way White eliminates the e4–pawn, and his bishops become active. The further events take on an almost forced character.

9...Bxe1 10.Rxe1 exd3



11.Bg5

A promising pawn sacrifice, involving the weakening of the position of the black king.

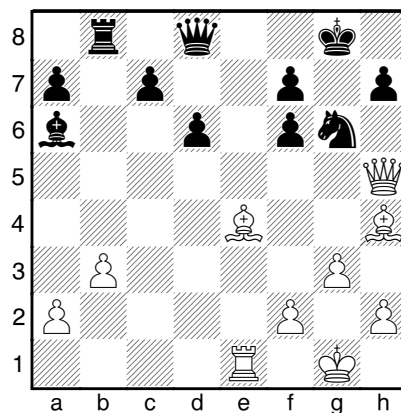
11...dxe2 12.Rxe2 Rxe2 13.Qxe2 Be6 14.Nxf6+ gxf6 15.Bh4

White was aiming at this position, considering that for the pawn he obtains good prospects of an attack. The play is of a lively character, in which White's bishops operate very effectively.

15...Ne5

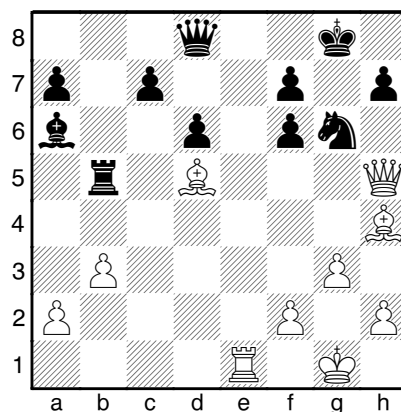
The knight hurries to the help of the king, on the square g6.

16.Bxb7 Bxc4 17.Qh5 Rb8 18.Be4 Ng6 19.b3 Ba6 20.Re1



A glance at the board is sufficient to see how all of the white pieces have taken up active positions. On 20...Qe7? there would have followed 21.Qa5! Now Black is obliged to display inventiveness.

20...Rb5 21.Bd5!



A move involving combinational calculation. On 21...c6 there is a combinational continuation of the attack – 22.Qh6! (of course, not 22.Bxf7+ on account of 22...Kg7) 22...Rxd5 (if 22...Nxb4 then 23.Bxf7+ Kxf7 24.Qxh7+ Kf8 25.Qh8+ Kf7 26.Qxd8 Nf3+ 27.Kh1 Nxe1 28.Qd7+ with an unceasing attack) 23.Bxf6 Qf8 24.Re8! Rd1+ 25.Kg2 Bf1+ 26.Kf3 Rd3+ 27.Kg4 Be2+ 28.f3 Bxf3+ 29.Kh3, and the white king shelters from the checks.

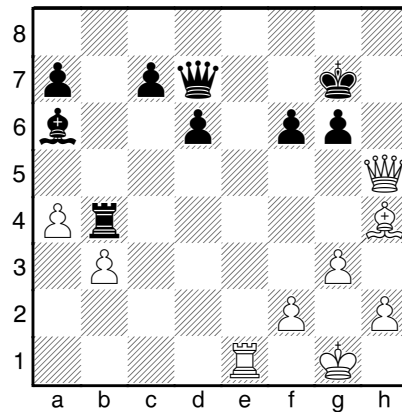
21...Kg7 22.a4

Striving to drive the rook from the 5th rank. On 22...Ra5 there could have followed 23.Qd1 with the threat of 24.b4; now 23...Nxb4 24.gxh4 fails to ease Black's defence.

22...Rb4 23.Bxf7! Qd7

On 23...N<sub>x</sub>h4 it is possible to continue 24.Re8 Nf3+ 25.Qxf3 Qd7 26.Rg8+ Kxf7 27.Qd5+ Qe6 28.Rg7+, winning the queen.

24.Bxg6 hxg6



25.Bxf6+!

Destroying the last remaining barriers. The bishop offers itself in sacrifice for the sake of the attack on the king, which now sets off on a dangerous path.

25...Kxf6 26.Qh8+ Kg5 27.f4+ Kg4 28.Re3

A quiet move with terrible mating threats.

28...g5 29.Qh6 Rxf4

Forced, since on 29...gxf4 there follows 30.Qg6+ Kh3 31.Qh5#.

30.gxf4 Kxf4 31.Kf2 Qc6 32.Qf6+ Kg4 33.Rg3+ Kh4 34.Qxg5#