

(The annotations to this game, by V. V. Smyslov, are from his autobiographical work *V poiskakh garmonii* (Fizkultura i Sport, 1979). The translation from the original Russian is by Douglas Griffin.)

Smyslov (Burevestnik) – Liberzon (TsSKA)

Board 3, 11th round, Team Championship of the All-Union Central Council of Trades Unions,
Riga, 23rd December 1968

1.c4 e5 2.Nc3 Nc6 3.g3 g6 4.Bg2 Bg7 5.Rb1

The idea of this manoeuvre consists in the immediate preparation of a pawn offensive on the queen's flank. The move 5.Rb1 was first played by me in a game against the Romanian master E. Ungureanu in the 18th Olympiad in Lucerne in 1968.

5...d6 6.b4 a6

The natural desire to prevent the advance b4–b5 has its negative aspects, which will come to light in the subsequent struggle when the open a-file facilitates the path to the development of White's initiative. In the above-mentioned game against Ungureanu there was played 6...f5 7.b5 Nce7 8.e3 Nf6 9.d4, and White obtained an active game.

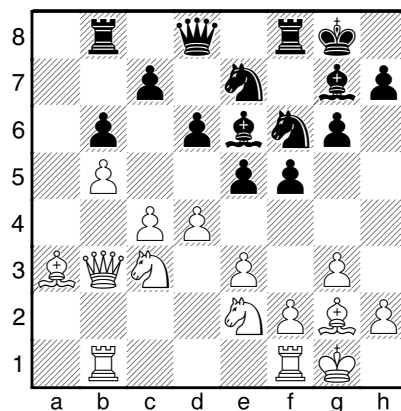
7.e3 f5 8.Nge2 Nf6 9.d3 0–0 10.0–0 Bd7 11.a4

The opening stage is completed, and White proceeds to the implementation of his basic strategic plan.

11...Rb8 12.b5 axb5 13.axb5 Ne7 14.Ba3 Be6 15.Qb3

Intending to subsequently strengthen the position with d3–d4. Black cannot reply 15...c5 on account of 16.bxc6 bxc6 17.Qxb8 Qxb8 18.Rxb8 Rxb8 19.Bxd6. In this variation the development of the bishop on a3 becomes significant.

15...b6 16.d4



Thus, the offensive in the centre has begun. 17.dxe5 dxe5 18.Rfd1, with strong positional pressure, is threatened.

16...e4 17.d5 Bf7 18.Nd4 Qd7

On 18...Nd7 White intended to continue 19.Ne6 Bxe6 20.dxe6 Ne5 21.Nd5! with an obvious advantage.

19.Bb2

Before proceeding to active play, White arranges his pieces in the optimum fashion, first of all transferring his bishop onto the long diagonal.

19...g5

In connection with White's growing initiative on the queen's flank Black tries to create counter-chances on the other wing, where many of his pieces are gathered.

20.Nce2 Kh8 21.Ra1 Ng6 22.f4!

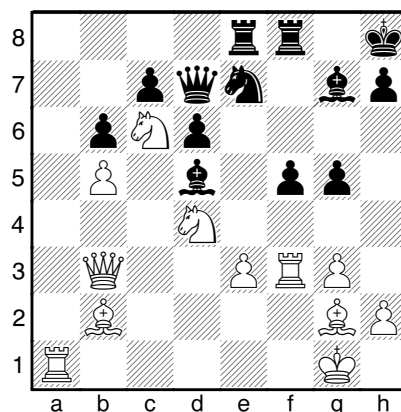
This move eliminates Black's counter-play. If 22...gxf4, then 23.Nxf4 Nxf4 24.Rxf4, and the f5-pawn is doomed to fall. If 22...g4, then 23.Ra7 followed by Nd4-c6 or Nd4-e6, and Black's situation is unenviable.

22...exf3 23.Rxf3 Ne7 24.Nc6 Rbe8 25.Ned4 Nfxd5!?

Black decides on extreme measures.

26.cxd5 Bxd5

The opponent reckons on gaining sufficient compensation for the piece given up in the variation 27.Qc2 Bxf3 28.Bxf3 Ng6, and Black's game becomes active.



27.Nxf5!!

An unexpected queen sacrifice, which becomes the beginning of stormy combinational

complications. If now 27...Bxb3, then 28.Bxg7+ Kg8 29.Ncxe7+ Rxe7 30.Bxf8 Kxf8 31.Ra8+ Kf7 32.Nd4+ Kg7 33.Nxb3, and White wins. Unfavourable is 27...Nxf5 on account of 28.Qxd5 Bxb2 29.Raf1 with a deadly pin on the f-file.

27...Rxf5 28.Bxg7+ Kg8!

A cold-blooded defence. 28...Kxg7 is weaker on account of 29.Qc3+ Kg8 30.Rxf5 Qxf5 31.e4 Bxe4 32.Bxe4 Qxe4 33.Re1.

29.Rxf5!!

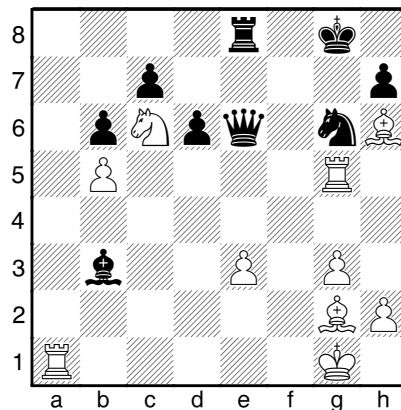
Once again leaving the queen under attack. Black is forced to accept this sacrifice. However, his king proves to be in a dangerous situation.

29...Bxb3 30.Rxg5 Ng6

If 30...h6, then 31.Nxe7+ Qxe7 (or 31...Rxe7 32.Ra8+ Re8 33.Bxh6+ Kh7 34.Rg7+ Qxg7 35.Bxg7 Rxa8 36.Bxa8 Kxg7 37.g4, and the bishop endgame is won for White) 32.Bxh6+ Kh8 33.Rh5! Kg8 34.Rf1, and White's attack should be successful.

31.Bh6 Qe6

Of course, not 31...Rxe3 on account of 32.Rxg6+ hxg6 33.Bxe3. If 31...Kh8, then 32.Nd4 Bc4 33.Bc6 Qh3 34.Nf5 with the double threat of 35.Bxe8 and 35.Bg2.



32.h4!

In this offensive of the h-pawn White's basic idea is revealed. Black's only defensive piece (the g6-knight) falls under a pin.

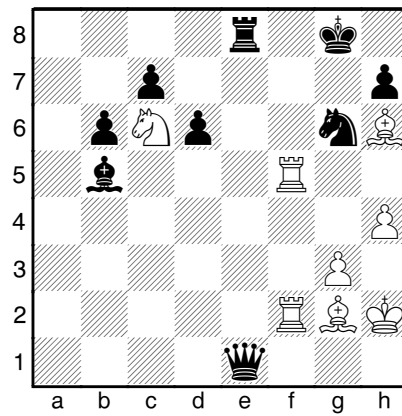
32...Qxe3+ 33.Kh2 Qc3 34.Rf1 Bc4

Black's rook is tied to the back rank. At the same time h4-h5 is threatened.

35.Rf2 Qe1 36.Rgf5

Now h4-h5 cannot be prevented, and Black has no satisfactory defence.

36...Bxb5



37.Bd2!

This move leads to a beautiful mating finale.

37...Qb1 38.Bd5+ Kh8

38...Kg7 is of no help in view of 39.Rf7+ Kh8 40.Bc3+ Ne5 41.Nxe5 dxe5 42.Rxc7. In this curious situation Black's queen cannot come to his help to defend against 43.Bxe5+.

39.Bc3+ Ne5 40.Nxe5 dxe5 41.Rxe5

Black resigned.