

(The annotations to this game, by V. V. Smyslov, are from his autobiographical work *V poiskakh garmonii* (Fizkultura i Sport, 1979). The translation from the original Russian is by Douglas Griffin.)

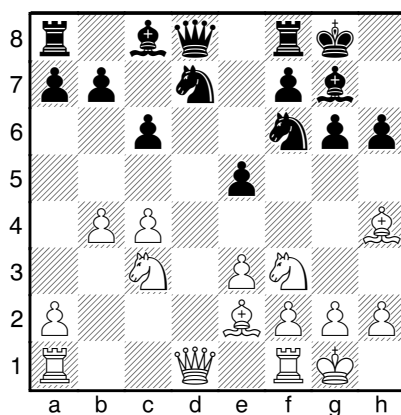
Smyslov – Fuller

5th round, Hastings, 1st January 1969

1.Nf3 g6 2.d4 Nf6 3.c4 Bg7 4.Nc3 0–0 5.Bg5 h6 6.Bh4 d6 7.e3

I have tested this opening system on many occasions. Here it is not easy for Black to display the activity characteristic of many variations of the King's Indian Defence.

7...Nbd7 8.Be2 e5 9.dxe5 dxe5 10.0–0 c6 11.b4



White's strategic plan is clear. He intends to advance the pawn to c5 and, having obtained an outpost at d6, to direct his knight there (Nf3–d2–c4–d6). The open d-file in this case becomes an important attacking line of communication.

11...a5 12.a3 axb4 13.axb4 Rxa1 14.Qxa1 g5

A typical freeing manoeuvre, which, however, weakens the castled position.

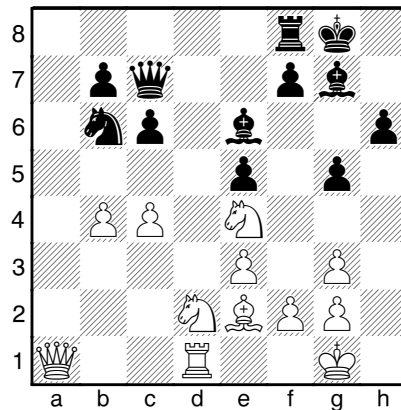
15.Bg3 Nh5 16.Nd2 Nxc3 17.hxc3 Nb6

It is difficult to indicate a better continuation. On 17...Qc7 there could follow 18.c5 b6 19.Qa3 bxc5 20.bxc5 Rd8 21.Nde4 with good prospects for White. Possibly, Black ought to have thought of counter-play with the move ...f7–f5.

18.Rd1 Be6 19.Nce4

The centralisation is associated with an obvious idea – to play c4–c5 and then transfer the knight to d6.

19...Qc7



20.Nc5!

A very strong move, arising from a concrete assessment of the position. On 20...Bc8 there follows 21.Qa5! with the threat of 22.Na4. Interesting is the variation 20...Bc8 21.Qa5 Bg4!? 22.Bxg4 Ra8 23.Ndb3 Rxa5 24.bxa5 Nxc4 25.Rd7 Qb8 26.Nxb7 with a strong attack for White.

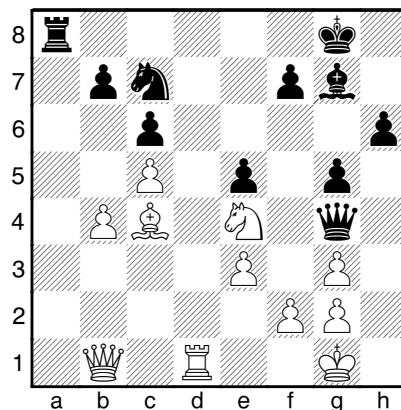
20...Ra8 21.Nxe6

With the exchange of this bishop, the weaknesses of the light squares on the king's flank become particularly perceptible.

21...Qe7 22.Qb1 Qxe6 23.c5 Nd5 24.Bc4 Qg4

If 24...Qe7, then 25.Ne4 Rd8 26.Qb3, and Black's situation is difficult.

25.Ne4 Nc7

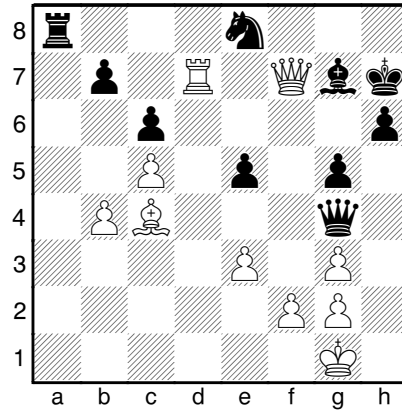


26.Nf6+!

A spectacular knight sacrifice serves as the prologue to a mating attack.

26...Bxf6 27.Qg6+ Bg7 28.Qxf7+ Kh8?

Losing immediately. White's combination is revealed in the variation 28...Kh7 29.Rd7 Ne8



(analysis diagram)

30.Be6! (only not 30.Qg8+ Kg6 31.Bf7+ Kf6 32.Bxe8 on account of 32...Qxd7!) 30...Qxb4 31.g4 with irresistible threats. (*Translator's note:* Alternatively, White can force mate with 31.Bf5+ Kh8 32.Qg6 Kg8 33.Rxg7+! Nxf7 34.Be6+.)

29.Rd7

Black resigned.