

(The annotations to this game, by V. V. Smyslov, are from his autobiographical work *V poiskakh garmonii* (Fizkultura i Sport, 1979). The translation from the original Russian is by Douglas Griffin.)

Polugaevsky – Smyslov

5th round, 3rd USSR Central Chess Club International, Moscow 1960

1.d4 d5 2.Nf3 Nf6 3.c4 c6 4.e3 g6

Since White has limited the mobility of his queen's bishop, the transposition to Schlechter's defence is perfectly justified.

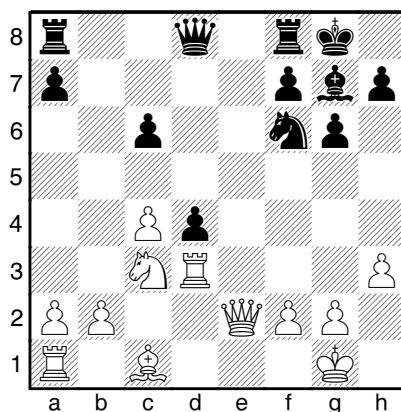
5.Nc3 Bg7 6.Bd3 0–0 7.0–0 Bg4 8.h3 Bxf3 9.Qxf3 e6 10.Rd1 Nbd7 11.e4

A natural, but unsuccessful continuation. It is not without interest to remind the reader that the same position occurred in my game against A. Bisguier (№ 29). As we know, the pawn offensive in the centre is premature and leads to serious difficulties for White.

11...e5! 12.exd5 exd4 13.dxc6 Ne5 14.Qe2

Of course, not 14.Qg3 on account of 14...Nh5. Now in the case of 14.Qe2 dxc3 15.Qxe5 Nh5 16.c7 Qh4 17.Qb5 the chances of the sides become equal. But the following simple reply secures Black the advantage.

14...Nxd3 15.Rxd3 bxc6



16.Bg5

If 16.Ne4, then 16...Re8 17.Nxf6+ Qxf6 18.Qd1 Qe6, threatening to take the c4-pawn or to penetrate with the queen to the e1-square. The attempt to provoke the move ...c6–c5 by means of 16.Be3 fails to achieve its goal in view of 16...Nh5 17.g4 Qh4 18.gxh5 dxc3, and Black's position is better.

16...Qa5 17.Bxf6 Bxf6 18.Ne4 Bg7 19.Qf3 Rab8

It is useful to provoke the move b2–b3 and to thereby limit the opponent's possible activity associated with the manoeuvre Rd3–a3.

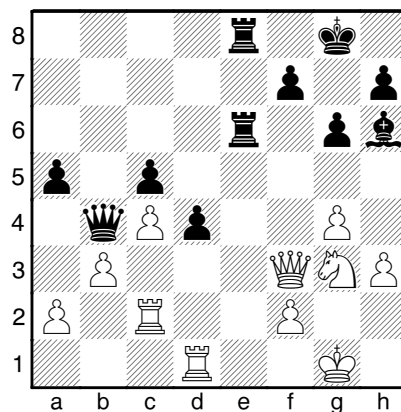
20.b3 Rfe8

Black's advantage has taken on real dimensions. He firmly controls the open e-file, and in addition a passed pawn has been created for him in the centre. If 21.Nf6+, then 21...Bxf6 22.Qxf6 c5 followed by doubling the rooks on the e-file. 21.Nd6 is impossible on account of 21...Re1+ 22.Rxe1 Qxe1+ 23.Kh2 Be5+.

21.Ng3 c5 22.Ne4 Rb6 23.g4 Rbe6 24.Ng3 Qa3

Before proceeding to active play, Black strengthens his position to the maximum. He rejected the win of a pawn with 24...Re1+ 25.Rxe1 Rxe1+ 26.Kg2 Qxa2 on account of 27.Qa8+ Bf8 28.Rf3, and counter-chances have appeared for White.

25.Rd2 a5 26.Rad1 Bh6 27.Rc2 Qb4



28.Kg2

On 28.Re2 possible is 28...Qc3! with the possible variations: 29.Qxc3 dxc3 30.Rc2 Re1+ 31.Rxe1 Rxe1+ 32.Kg2 Rc1; or 29.Kg2 Rxe2 30.Nxe2 Qc2 31.Ng3 Re3 32.Qa8+ Kg7 33.Rf1 Bf4; or 29.Rxe6 Qxf3 30.Rxe8+ Kg7 31.Ree1 Bf4 with an attack; or 29.Rd3 Qa1+ 30.Kg2 Rxe2 31.Nxe2 Qxa2 32.Ng3 Re3 33.Rxe3 dxe3, and White is not to be saved.

28...Bg5 29.Rd3

If 29.Re2, then 29...Rxe2 30.Nxe2 Qa3 31.Ng3 Qxa2 32.Ne4 Be7 33.Re1 Rf8 34.Ng3 Bh4, retaining the material gain. For instance: 35.Re5 a4 36.Rxc5 (or 36.bxa4 Bxg3 37.Qxg3 Qxc4) 36...axb3 37.Rb5 b2 38.Qb3 Qxb3 39.Rxb3 Rc8 40.Rxb2 Rxc4 with good prospects in the endgame.

29...Bh4 30.Nf1 Kg7 31.Rcd2 Qb8!

The queen switches to the struggle on the king's flank. A direct attack on the king is brewing.

32.Ng3 Rf6 33.Qd1 Qb7+

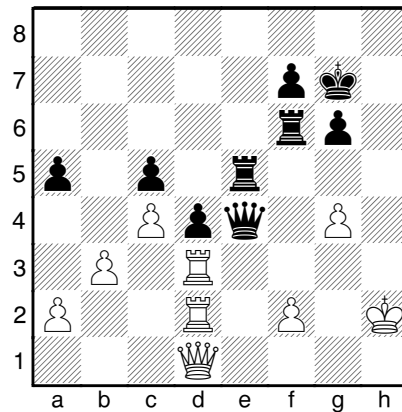
Black refrained from the intended thrust 33...Re3 on account of 34.Nf5+! gxf5 35.fxe3 Qg3+ 36.Kh1 dxe3 37.Rg2 Qxh3+ 38.Rh2 Qg3 39.Rg2, and White continues to defend.

34.Kh2

34.Rf3 is bad on account of 34...Re1.

34...Qc7 35.Kg2 Qc6+ 36.Kh2 Bxg3+ 37.Rxg3 Qe4 38.Rgd3 Re5 39.Rc2 h5! 40.Rcd2 hxg4 41.hxg4

Not 41.Qxg4 in view of 41...Rxf2+ 42.Rxf2 Qxd3.



In the position in the diagram the game was adjourned. Analysis showed that Black's advantage is sufficient for victory.

After the resumption there followed:

41...g5

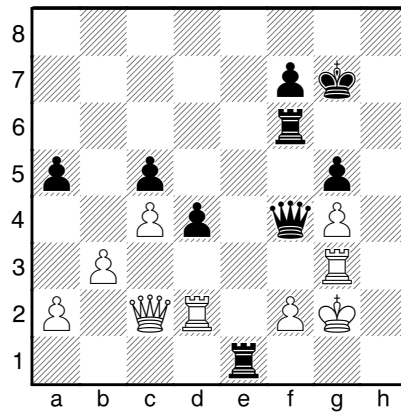
The sealed move. The transfer of the rook along the 6th rank is threatened.

42.Rh3 Ree6! 43.Qc2

In the case of 43.Kg1 Rh6 44.Rdd3 f5! 45.gxf5 g4 Black obtains an irresistible attack. For instance: 46.fxe6 Rxh3 47.Rxh3 gxh3 48.Qf1 Qg4+ 49.Kh2 d3 and Black wins in view of the threat of 50...Qg2+. Or 46.Rxh6 Rxh6 47.f3 gxf3 48.Qxf3 Qe1+ 49.Kg2 Qh1+. A curious variation is 46.Rdg3 Qe1+ 47.Qxe1 Rxe1+ 48.Kg2 Rxh3 49.Rxg4+ Kf7 50.Kxh3 d3!, and the pawn promotes to a queen.

43...Qf4+ 44.Rg3 Re1 45.Kg2

Forced in view of the threat of ...Rh6+ and ...Rhh1.



Now a spectacular blow decides matters.

45...Re3!

White resigned. The rook cannot be taken on account of mate in 3 moves. On 46.Qd1 there follows 46...Rxf3+ 47.fxf3 Qe4+ 48.Kg1 Rf3.